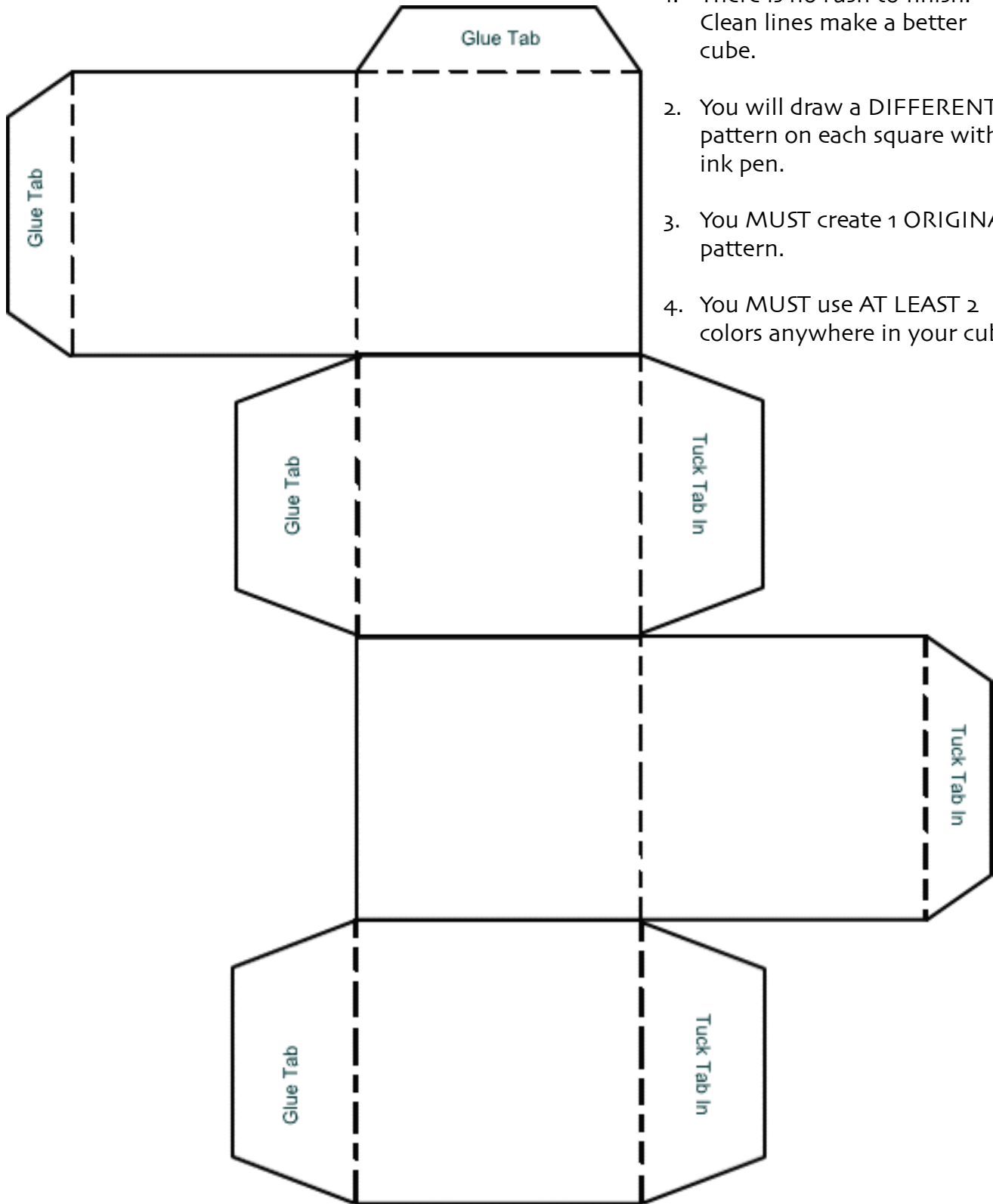


Zentangle Cube

Name and Class Code: _____



1. There is no rush to finish. Clean lines make a better cube.
2. You will draw a DIFFERENT pattern on each square with ink pen.
3. You MUST create 1 ORIGINAL pattern.
4. You MUST use AT LEAST 2 colors anywhere in your cube.

After you finish, you may carefully cut the cube out and fold on each line. DO NOT CUT OFF TABS. You may use a glue stick to put the cube together.